

# Beacon Tower Flasher

## FS & FA Series

### Solid State Flasher



10 YEAR WARRANTY

- Zero Voltage Switching - Up to 10 Times Longer Lamp Life
- No RFI Caused by Contacts Closing
- High Inrush Capability - Up to 200 A
- RF Model for AM Hot Towers & Other High RF Installations
- Auxiliary Units for Synchronous Flashing or Constant Line Loading

Approvals:  (FS155 & FA155 Models Only)

### Description

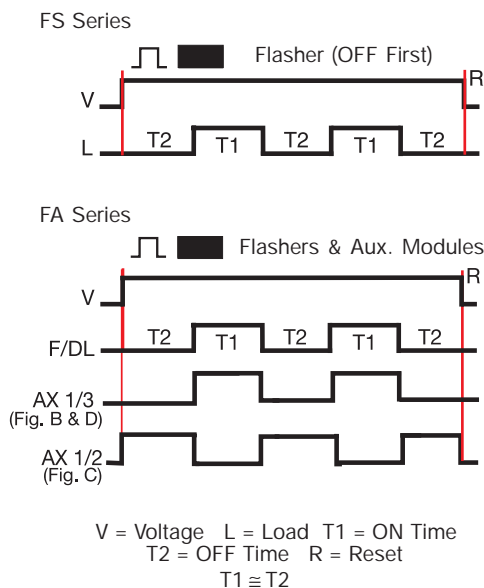
B-KON Flashers have proven their reliability through years of use on Communication Towers, Smoke Stacks, Cooling Towers, Tall Buildings, Bridges and Utility Towers. The highest quality components are encapsulated in a rugged plastic housing with a molded-in heat transfer plate. The flash rate, ratio, and fail-safe design meet FAA regulations. Zero voltage switching can increase lamp life up to ten times. The FS155-30RF & FS165-30RF include superior RF Filtering Circuitry for use in high RF installations; including AM Hot Towers.

### Operation

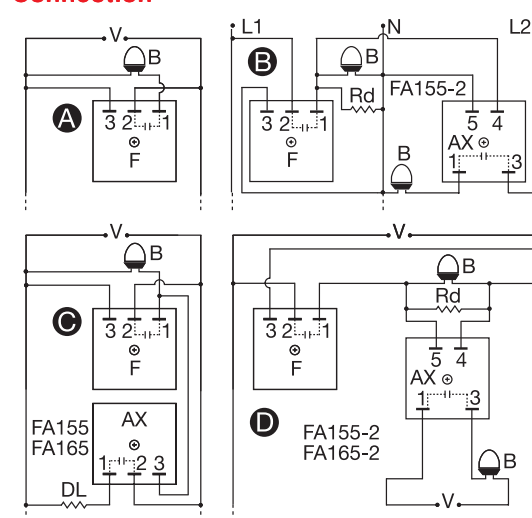
Upon application of input voltage, the T2 OFF time begins. At the end of the OFF time, the T1 ON time begins and the load energizes. At the end of T1, T2 begins and the load de-energizes. This cycle repeats until voltage is removed.

**Reset:** Removing input voltage resets the output and the sequence to T2.

### Function



### Connection

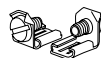


- F = Flasher (FS155-30T, FS155-30RF, FS165-30T, FS165-30RF)  
AX = Auxiliary Unit  
B = Beacon  
DL = Dummy Load for Constant Line Loading  
Rd = 3.3 K $\Omega$  @ 5 W for 120 V AC  
8.5 K $\Omega$  @ 5 W for 230 V AC  
Dashed lines are internal connections.

### Accessories



Female quick connect  
P/N's:  
P1015-13 (AWG 10/12)  
P1015-64 (AWG 14/16)  
P1015-14 (AWG 18/22)



Quick connect to  
screw adaptor  
P/N: P1015-18

See accessory pages for specifications.

### Ordering Table

Input	Wattage	Inrush	Description	Part Number
120 V AC	2500 W	200 A	For High RF Radiation locations including AM Hot Towers	FS155-30RF
120 V AC	2500 W	200 A	Standard Flasher	FS155-30T
230 V AC	5000 W	200 A	For High RF Radiation locations including AM Hot Towers	FS165-30RF
230 V AC	5000 W	200 A	Standard Flasher	FS165-30T
120 V AC	2500 W	200 A	Auxiliary unit for synchronous operating of additional beacons	FA155-2
230 V AC	5000 W	200 A	Auxiliary unit for synchronous operating of additional beacons	FA165-2
120 V AC	2500 W	200 A	Auxiliary unit to provide constant line loading	FA155
230 V AC	5000 W	200 A	Auxiliary unit to provide constant line loading	FA165

# Beacon Tower Flasher

## FS & FA Series

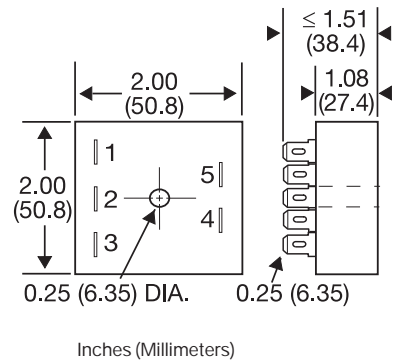
### Solid State Flasher

#### Technical Data

<b>Specifications</b> Operation Flash Rate (FS Series Only) ON/OFF Ratio (FS Series Only)	Single & multiple beacon flashing with auxiliary modules 30 +/-10 flashes per minute 50% ... 67% ON time; 33% ... 50% OFF time
<b>Input</b> Voltage Frequency	120 or 230 V AC +/-20% 50 ... 60 Hz
<b>Output</b> Output Rating (Zero Voltage Switching) Inrush Current	2500 W at 120 V AC; 5000 W at 230 V AC 200 A peak for 1 cycle of AC line
<b>Mechanical</b> Mounting* Termination	Surface mount with one #10 (M5 x 0.8) screw 0.25 in. (6.35 mm) male quick connect terminals
<b>Protection</b> Circuitry	Encapsulated
<b>Environmental</b> Operating Temperature Storage Temperature Humidity Weight	-40°C ... +65°C -40°C ... +85°C 95% relative, non-condensing ≅ 3.9 oz (111 g)

\* **Note:** Must be mounted to metal surface using the included heat sink compound. The maximum mounting surface temperature is 90° C.

#### Mechanical View



Note:  
 Terminal # 2 is not included on FA155-2, FA165-2.  
 Terminal # 4 & # 5 are not included on all others.